

# DEWALT®

## STATIONARY SAWS

CORDLESS AND CORDED NORDIC RANGE BROCHURE



[www.DEWALT.com](http://www.DEWALT.com)

**GUARANTEED TOUGH.®**



# **CORDLESS** **MITRE-/TABLE SAWS**





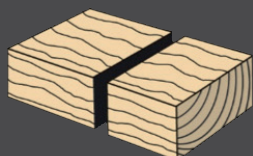
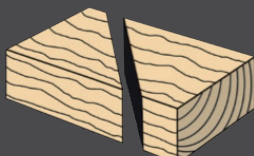
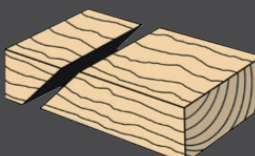
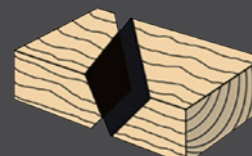


**POWER OF CORDED**  
**FREEDOM OF CORDLESS**




**54V XR<sup>FLEX</sup>VOLT**
**XPS**  
CROSS CUT POSITIONING SYSTEM™

## CUTTING CAPACITIES IN MM:

**270 × 62 MM**

**90°/90°**
**189 × 62 MM**

**45°/90°**
**173 × 48 MM**

**90°/45°**
**190 × 48 MM**

**45°/45°**

## 54V XR FLEXVOLT 216 MM MITRE SAW DCS777

The perfect cordless solution for second fix work on site, compact and lightweight while offering all the performance and capacity of a mitre saw. XPS cutline technology delivers supreme cut accuracy and illumination of the workpiece without the set up and problems of laser systems.

SPECIFICATIONS	
Power output	1750 watt
Blade diameter	216 mm
Blade bore	30 mm
Max. blade speed	6300 min-1
Mitre (max. positions)	50° left and right
Bevel (max. positions)	48°/0° left and right
Weight	15.0 kg
Recommended benches	DE7023 or DE7033

ART.NR.	PRODUCT DESCRIPTION
DCS777N-XJ	54V FLEXVOLT mitresaw 216 mm bare
DCS777T2-QW	54V FLEXVOLT mitresaw 216 mm 2 x 6.0 Ah
RECOMMENDED ACCESSORIES:	
DT99568-QZ	216 mm, 24 T, 30 mm arbor diameter
DT99569-QZ	216 mm, 36 T, 30 mm arbor diameter
DT99568-QZ	216 mm, 60 T, 30 mm arbor diameter





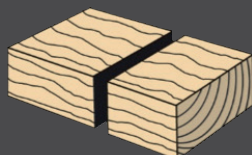
**54V XR FLEXVOLT**

**WIRELESS TOOL CONTROL**

**XPS**  
CROSS CUT POSITIONING SYSTEM

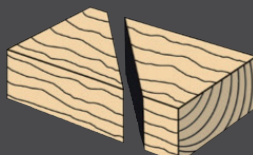
## CUTTING CAPACITIES IN MM:

**305 × 77 MM**



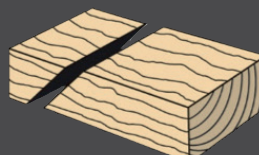
**90°/90°**

**210 × 77 MM**



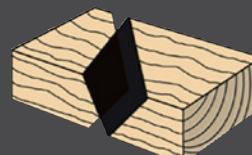
**45°/90°**

**305 × 50 MM**



**90°/45°**

**210 × 50 MM**



**45°/45°**

## 54V XR FLEXVOLT 250 MM MITRE SAW DCS727

The DCS727 offers the ultimate combination of accuracy, power and cordless freedom. Other features include Wireless Tool Control to enable automatic stop start dust extraction when used with the DCV586M, XPS crosscut positioning system for the ultimate in accuracy and visibility with no calibration needed and machined side handles for increased portability on site.

### SPECIFICATIONS

Blade diameter	250 mm
Blade bore	30 mm
Max. blade speed	4300 min-1
Mitre (max. positions)	50° left and right
Bevel (max. positions)	49° left and right
Weight	20,5 kg
Recommended benches	DE7023 or DE7033

### ART.NR.

### PRODUCT DESCRIPTION

DCS727N-XJ	54V FLEXVOLT mitre saw 250 mm bare
DCS727T2-QW	54V FLEXVOLT mitre saw 250 mm 2 x 6.0 Ah

### RECOMMENDED ACCESSORIES:

DT99571-QZ	250 mm, 24 T, 30 mm arbor diameter
DT99572-QZ	250 mm, 36 T, 30 mm arbor diameter
DT99573-QZ	250 mm, 60 T, 30 mm arbor diameter



HOW TO PAIR THE

# FLEXVOLT EXTRACTOR WITH A TOOL HAVING WIRELESS TOOL CONTROL FUNCTION.



THE SYSTEM WORKS WITH  
THE TOOLS, WHICH HAS  
THE WIRELESS TOOL CONTROL  
ICON IN THE LEAFLET



**WIRELESS  
TOOL CONTROL**





”  
**ADVANTAGE WITH  
WIRELESS TOOL  
CONTROL – NO CORDS  
AROUND YOU, WHEN  
USING EXTRACTOR  
AND POWERTOOL.**  
”

 **WIRELESS  
TOOL CONTROL**

## **AUTOMATIC START OF FLEXVOLT EXTRACTOR, WHEN START WORKING WITH THE TOOL**

The perfect solution for second To Pair  
with a DEWALT Wireless Tool Control Tool

1. Press the three position switch (1) to the Wireless Tool Control position (2).
2. Press and hold the Wireless Tool Control pairing button (3) on the DCV586M and pull the trigger on the Wireless Tool Control equipped tool at the same time.
3. The LED (4) will be steadily illuminated to indicate a successful pairing.

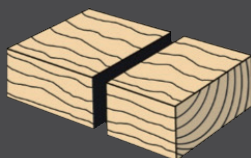
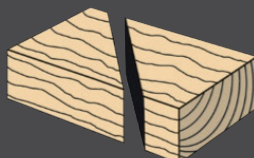
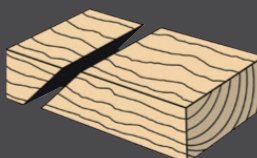
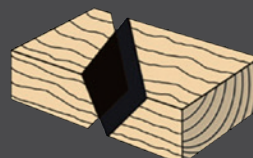
NOTE: Only one tool can be paired to the DCV586M at a time. If the unit is already paired the previous tool connection will be overridden.






**54V XR<sup>FLEX</sup>VOLT**
**XPS**  
CROSS CUT POSITIONING SYSTEM

## CUTTING CAPACITIES IN MM:

**303 × 110 MM**

**90°/90°**
**211 × 112 MM**

**45°/90°**
**268 × 63 MM**

**90°/45°**
**315 × 50 MM**

**45°/45°**

## 2 X 54V XR FLEXVOLT 305 MM MITRE SAW DHS780

The only 305 mm mitre saw with the perfect combination of 230V power and capacity with cordless freedom. 2 x 54V XR FLEXVOLT batteries or AC power adaptor (230V) make the most of your performance anytime, anywhere. XPS cutline technology delivers supreme cut accuracy and illumination of the workpiece without the set up and problems of laser systems.



230V AC power adaptor

### SPECIFICATIONS

Blade diameter	305 mm
Bore size	30 mm
Cutting Capacity 90°/90°	303 x 110 mm
Mitre capacity (Left/Right)	60°/50°
Bevel capacity (Left/Right)	49°/49°
Weight	25,5 kg

**RECOMMENDED BENCHES:** DE7023 or DE7033

### ART. NO. PRODUCT DESCRIPTION

DHS780N-XJ	2 X 54V XR FLEXVOLT Mitre saw 305 mm bare
DHS780T2A-QW	2 X 54V XR FLEXVOLT Mitre saw 305 mm 2 x 6.0 Ah
DCB500-QS	230 V power adaptor for DHS780

### RECOMMENDED ACCESSORIES:

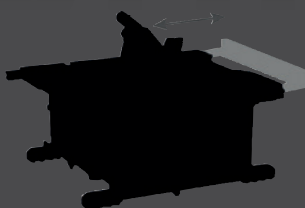
DT99574-QZ	305 mm, 42 T, 30 mm arbor diameter
DT99575-QZ	305 mm, 60 T, 30 mm arbor diameter
DT99576-QZ	305 mm, 78 T, 30 mm arbor diameter



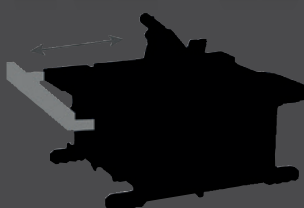


**54V XR FLEXVOLT**

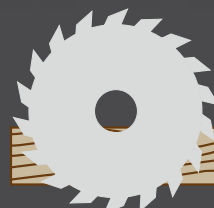
## CUTTING CAPACITIES IN MM:



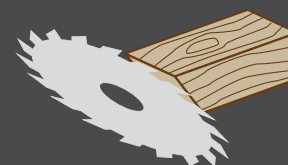
**610 MM**



**318 MM**



**65 MM  
90°**



**45 MM  
45°**

## 54V XR FLEXVOLT TABLESAW DCS7485

54V XR cordless table saw featuring a 610 mm ripping capacity with class leading rack and pinion fence adjustment. Lightweight, compact and easy to transport without compromising performance. Intuitive tool free adjustments and onboard accessory storage.

### SPECIFICATIONS

Blade Diameter	210 mm
Depth of cut at 90°	65 mm
Ripping Capacity 90°/90°	610 mm
Bevel Capacity	48°
Weight	21.5 kg

**RECOMMENDED BENCHES:** DE7450, DE7400, DWE74911

### ART. NO. PRODUCT DESCRIPTION

DCS7485N-XJ	54V XR FLEXVOLT table saw 210 mm bare
DCS7485T2-QW	54V XR FLEXVOLT table saw 210 mm 2 x 6.0 Ah

### RECOMMENDED ACCESSORIES:

DT20432-QZ	210 mm, 24 T, 30 mm arbor diameter
DT20433-QZ	210 mm, 40 T, 30 mm arbor diameter
DWV9470-XJ	Dustadapter with Y-split for table saws with airlock



**DEWALT****XR FLEX  
VOLT****POWER OF CORDED | FREEDOM OF CORDLESS**

## WHAT IS XR FLEXVOLT?

**XR FLEXVOLT** is a range of 54V power tools that offer performance and runtime which has never been seen before. For the first time professional tradesmen can reliably undertake heavy-duty construction applications without the need for mains power.

This innovation means that you can have true mains performance across a range of tools without the inconvenience of a cord. **DEWALT XR FLEXVOLT** is the only battery on the market that can switch from 54V to 18V making it backward compatible with your existing XR powertools.



# 18V 54V

## CORDLESS WITHOUT COMPROMISE

Traditionally, when compared with corded power tools even the most efficient cordless systems required a compromise between portability and power.

**DEWALT** has unlocked the true potential of cordless technology to deliver a growing range of 54V power tools that require zero compromise. All the power of corded, with the freedom of cordless.



# CONVERTIBLE BATTERY PACK

**18V XR**

Backwards compatible

**54V XR FLEXVOLT**

XR FLEXVOLT



**DEWALT** is committed to offering real-world practicality and convenience.

The XR FLEXVOLT battery pack is not only interchangeable across the complete 54V range but is also backwards compatible with all existing 18V XR tools. Circular saws, Drills, Table Saws, Nail Guns, Alligator Saws, Impact Drivers – professional tradesmen can now operate every power tool they need on a single cordless system.

**18V XR**



**54V XR FLEXVOLT**



**XR FLEXVOLT**



## ADVANCED TECHNOLOGY

Standard XR batteries have 5 x 3.6V (18V) cells connecting in a series and either one or two strings in parallel, giving either an 18V 2.0 Ah or an 18V 5AH battery.

FLEXVOLT batteries are flexible. They connect in parallel for 18V tools and in a series for 54V tools. The result? The right power for the tool - with increased runtime and consistent performance.



**12 AH**

**SOMETIMES  
BIGGER IS  
BETTER**

**RUNTIME  
THAT CANNOT BE  
BEATEN**



**54V XR FLEXVOLT**



## 12AH XR FLEXVOLT BATTERY DCB548

Amp up your tools with the 12 Ah XR FLEXVOLT battery. The DCB548 will deliver the ultimate performance and runtime in the same size as our 9.0 Ah XR FLEXVOLT battery. It also includes a built-in LED Fuel Gauge for instant charge status, and is compatible with all 18V XR tools and chargers.

ART. NO.	PRODUCT DESCRIPTION
DCB546-XJ	18/54V XR FLEXVOLT 6.0/2.0 Ah battery
DCB547-XJ	18/54V XR FLEXVOLT 9.0/3.0 Ah battery
DCB548-XJ	18/54V XR FLEXVOLT 12.0/4.0 Ah battery
DCB546T2-XJ	18/54V XR FLEXVOLT battery starter kit 2 x 6.0 Ah
DCB547X2-XJ	18/54V XR FLEXVOLT battery starter kit 2 x 9.0 Ah
DCB548Y2-XJ	18/54V XR FLEXVOLT battery starter kit 2 x 12.0 Ah
DCB118T2-QW	FLEXVOLT starter kit 2 x 6.0 Ah, 1 x DCB118
DCB118X2-QW	FLEXVOLT starter kit 2 x 9.0 Ah, 1 x DCB118
DCB118Y2-QW	FLEXVOLT starter kit 2 x 12.0 Ah, 1 x DCB118
DCB118Y2T-QW	FLEXVOLT starter kit 2 x 12.0 Ah, 1 x DCB118, Tstak II
DCB132T2-QW	FLEXVOLT starter kit 2 x 6.0 Ah, 1 x DCB132
DCB132X2-QW	FLEXVOLT starter kit 2 x 9.0 Ah, 1 x DCB132



## XR FLEXVOLT CHARGER DCB118

The DCB118 charges 54V XR FLEXVOLT and 18V XR batteries and is fan cooled for optimum performance and operates between 4°C and 40°C. It can be wall mounted to keep your jobsite or van tidy. Is charging 8A at the port.



## XR FLEXVOLT DUAL CHARGER DCB132

The DCB132 simultaneously charges two 54V XR FLEXVOLT or 18V XR batteries at a 4A output on each port.



## XR FLEXVOLT CHARGER DCB104

Charges up to four 12V XR, 18V XR and XR FLEXVOLT batteries at the same time. This fast charger quickly charges a 5.0 Ah 18V XR battery in 50 minutes, and a 9.0 Ah XR FLEXVOLT battery in 75 minutes. Is charging 8A at the ports.



## XR FLEXVOLT CHARGER DCB117

The DCB117 charges 54V XR FLEXVOLT and 18V XR batteries and is fan cooled for optimum performance and operates between 4°C and 40°C. It can be wall mounted to keep your jobsite or van tidy. Is charging 12A at the port.



ART. NO.	PRODUCT DESCRIPTION
DCB118-QW	18V XR fast charger 8.0 Ah
DCB132-QW	18V XR Dual port charger 4.0 Ah
DCB104-QW	18V XR 4 port fast charger 8.0 Ah
DCB117-QW	18V XR fast charger 12.0 Ah

### ABOUT DEWALT

With more than 90 years' experience in designing and manufacturing world-class solutions for the professional construction industry, DeWALT represents performance, innovation and reliability. Tools that carry the DeWALT brand are Guaranteed Tough: engineered to exceed the expectations of building contractors and professional tradesmen, even when tested in the most extreme construction environments. The DeWALT reputation for quality has been earned from the company's commitment to providing best-in-class

products that meet the highest levels of durability and end-user protection. DeWALT supplies complete application solutions for the modern construction environment, which include corded and cordless power tools, saw blades and power tool accessories, dust extraction attachments, anchors and fastenings, jobsite storage, lasers and instruments, generators, compressors and more. DeWALT also has one of the most extensive service and repair networks in the world.

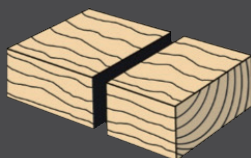
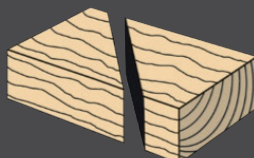
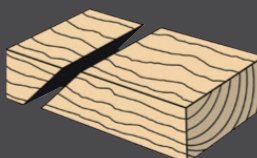
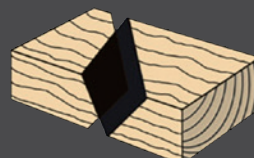
For more information, visit [www.DeWALT.com](http://www.DeWALT.com)






**18V XR**
**XPS**  
CROSS CUT POSITIONING SYSTEM

## CUTTING CAPACITIES IN MM:

**250 × 50 MM**

**90°/90°**
**176 × 50 MM**

**45°/90°**
**250 × 35 MM**

**90°/45°**
**176 × 35 MM**

**45°/45°**

## 18V XR 184 MM MITRE SAW DCS365

DEWALT most compact mitresaw and easy to transport on site. The XPS shadow line cut indicator provides fast accurate alignment of the blade while illuminating the work piece for increased productivity. Horizontal rails create additional capacity for larger materials. Easy storage in vans and shelves in containers on site.

### SPECIFICATIONS

Voltage	18V
Blade diameter	184 mm
Blade bore	16 mm
Blade body thickness	1 mm
Max. blade speed	3750 min-1
Mitre (max. positions) left/right	45°/45°
Bevel (max. positions) left/right	48°/0°
Weight	10,5 kg

**RECOMMENDED BENCHES:** DE7023 or DE7033

### ART. NO. PRODUCT DESCRIPTION

DCS365N-XJ 18V XR mitre saw 184 mm bare

### RECOMMENDED ACCESSORIES:

DT1668-QZ	184 mm, 40 T, 16 mm arbor diameter
DT1670-QZ	184 mm, 60 T, 16 mm arbor diameter
DT1669-QZ	184 mm, 24 T, 16 mm arbor diameter



## FOR USE WITH:

XR FLEXVOLT range and  
all compatible corded  
and cordless circular  
saws, mitre saws and  
table saw

- **C3 NEXT GENERATION CARBIDE**  
Up to 3 regrinds
- **THIN KERF** Ideal for cordless  
and less push force required
- **EXPANSION SLOTS**  
Dampen noise and vibration
- **PATENTED GRIND ANGLES**  
For faster cuts with lower force



See blade assortment  
for benchtop products  
on **DEWALT.COM**

**XR EXTREME  
RUNTIME**



The background of the page is a close-up, high-action photograph of a DeWalt 230V mitre saw. The saw's blade is in motion, creating a blurred effect, and it is cutting through a piece of wood. The image is filled with mechanical details, metal parts, and wood shavings, conveying a sense of power and precision.

# 230 VOLT MITRE SAWS



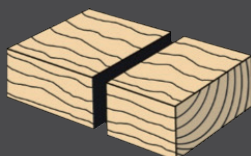






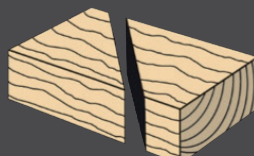
## CUTTING CAPACITIES IN MM:

**265 × 62 MM**



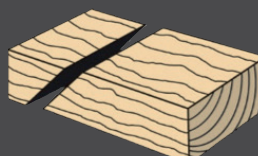
**90°/90°**

**189 × 62 MM**



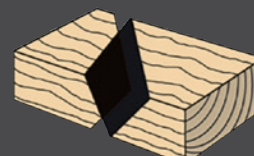
**45°/90°**

**173 × 48 MM**



**90°/45°**

**190 × 48 MM**



**45°/45°**

## 230V 216 MM MITRE SAW **DWS773**

DEWALT construction mitresaw with 1300 Watt motor for powerful cutting in all materials. The classic pull saw design improved and updated for the modern user. The base and fence have been machined to meet the accuracy requirements of the most demanding applications.

### SPECIFICATIONS

Voltage	230V
Power input	1300 Watt
XPS	No
Blade diameter	216 mm
Blade bore	30 mm
Blade speed, max	4600 min-1
Mitre positions, max. Left/right	48°/48°
Bevel position, max. Left	48°
Weight	11,5 kg
<b>RECOMMENDED BENCHES:</b>	DE7023 or DE7033

### ART. NO. PRODUCT DESCRIPTION

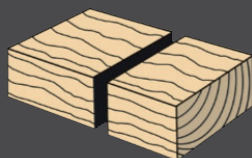
DWS773-QS	230V mitre saw 216 mm, 1300 watt
<b>RECOMMENDED ACCESSORIES:</b>	
DT1952-QZ	216 mm, 24 T, 30 mm arbor diameter
DT1953-QZ	216 mm, 40 T, 30 mm arbor diameter
DT1962-QZ	216 mm, 3 pack (2X 24T/1X 40T), 30 mm arbor diameter





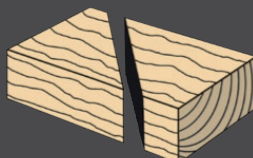
## CUTTING CAPACITIES IN MM:

**265 × 62 MM**



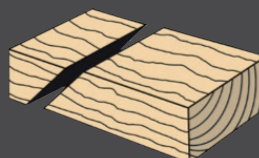
**90°/90°**

**189 × 62 MM**



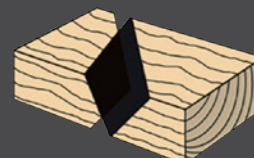
**45°/90°**

**173 × 48 MM**



**90°/45°**

**190 × 48 MM**



**45°/45°**

## 230V 216 MM MITRE SAW DWS774

DEWALT construction mitresaw with 1400 Watt motor for powerful cutting in all materials. The classic pull saw design improved and updated for the modern user. The base and fence have been machined to meet the accuracy requirements of the most demanding applications. Including the XPS Shadow line cut indicator which provides fast accurate alignment of the blade while illuminating the work piece for increased productivity and no adjustment required.

### SPECIFICATIONS

Power input	1400 Watt
Blade diameter	216 mm
Blade bore	30 mm
Blade speed, max	4600 min <sup>-1</sup>
Mitre positions, max. Left/right	48°/48°
Bevel position, max. Left	48°
Weight	11,5 kg
<b>RECOMMENDED BENCHES:</b>	DE7023 or DE7033

### ART. NO. PRODUCT DESCRIPTION

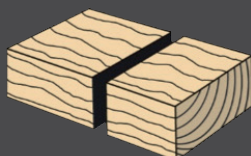
DWS774-QS	230V Mitresaw 216 mm, 1400 watt
<b>RECOMMENDED ACCESSORIES:</b>	
DT1952-QZ	216 mm, 24 T, 30 mm arbor diameter
DT1953-QZ	216 mm, 40 T, 30 mm arbor diameter
DT1962-QZ	216 mm, 3 pack (2X 24T/1X 40T), 30 mm arbor diameter





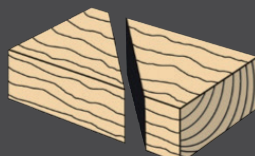
## CUTTING CAPACITIES IN MM:

**300 × 70 MM**



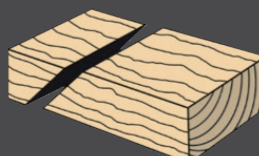
**90°/90°**

**212 × 70 MM**



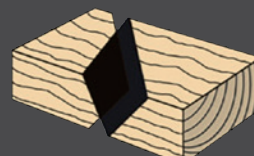
**45°/90°**

**300 × 50 MM**



**90°/45°**

**212 × 50 MM**



**45°/45°**

## 230V 216 MM MITRE SAW DW712N

Popular mitresaw with mitre and bevel angle detents, that allow for quick and easy set up of the saw. The innovative grooving stop allows adjustment of the cutting depth for grooving and rebating applications. Horizontal rails create additional capacity for larger materials.

### SPECIFICATIONS

Voltage	230 Volt
Power input	1600 watt
Blade diameter	216 mm
Blade bore	30 mm
Blade speed	5400 min <sup>-1</sup>
Mitre (max. positions) left/right	50°/60°
Bevel (max. positions) left/right	48°/ 2°
Weight	21 kg

**RECOMMENDED BENCHES:** DE7023 or DE7033

### ART. NO. PRODUCT DESCRIPTION

DW712N-QS 230V Mitre saw 216 mm, 1600 watt

### RECOMMENDED ACCESSORIES:

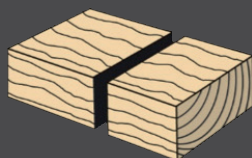
DT1952-QZ	216 mm, 24 T, 30 mm arbor diameter
DT1953-QZ	216 mm, 40 T, 30 mm arbor diameter
DT1962-QZ	216 mm, 3 pack (2X 24T/1X 40T), 30 mm arbor diameter





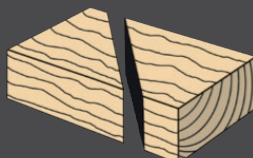
## CUTTING CAPACITIES IN MM:

**300 × 70 MM**



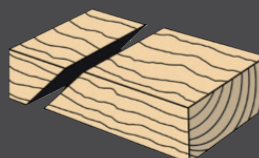
**90°/90°**

**212 × 70 MM**



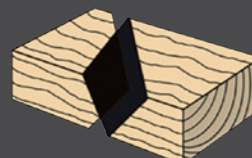
**45°/90°**

**300 × 50 MM**



**90°/45°**

**212 × 50 MM**



**45°/45°**

## 230V 216 MM MITRE SAW DW712

Popular mitresaw with mitre and bevel angle detents, that allow for quick and easy set up of the saw. The innovative grooving stop allows adjustment of the cutting depth for grooving and rebating applications. Horizontal rails create additional capacity for larger materials. Option to cut with different blade speed.

### SPECIFICATIONS

Voltage	230 Volt
Power input	1600 watt
Blade diameter	216 mm
Blade bore	30 mm
Blade speed	3500–4600 min <sup>-1</sup>
Mitre (max. positions) left/right	50°/60°
Bevel (max. positions) left/right	48°/ 2°
Weight	21 kg
RECOMMENDED BENCHES	DE7023 or DE7033

### ART. NO. PRODUCT DESCRIPTION

DW712-QS 230V Mitre saw 216 mm, 1600 watt

### RECOMMENDED ACCESSORIES:

DT1952-QZ 216 mm, 24 T, 30 mm arbor diameter

DT1953-QZ 216 mm, 40 T, 30 mm arbor diameter

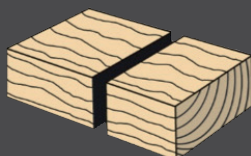
DT1962-QZ 216 mm, 3 pack (2X 24T/1X 40T), 30 mm arbor diameter





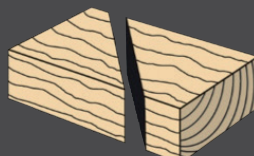
## CUTTING CAPACITIES IN MM:

**270 × 62 MM**



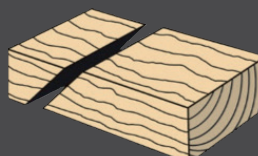
**90°/90°**

**189 × 62 MM**



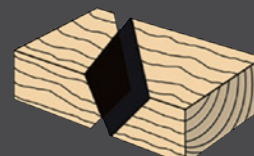
**45°/90°**

**270 × 48 MM**



**90°/45°**

**190 × 48 MM**



**45°/45°**

## 230V 216 MM MITRE SAW DWS777

The popular mitresaw with 1800 Watt motor for powerful cutting in all materials. Sliding left hand fence with measuring scale for improved material support and management. The classic saw has a design for the modern user and easy access to attach a vacuum cleaner. The base and fence have been machined to meet the accuracy requirements of the most demanding applications.

### SPECIFICATIONS

Power input	1800 watt
Blade diameter	216 mm
Blade bore	30 mm
Max. blade speed	6300 min <sup>-1</sup>
Mitre (max. positions) left/right	50°/50°
Bevel (max. positions) left	48°
Weight	15,5 kg

**RECOMMENDED BENCHES:** DE7023 or DE7033

### ART. NO. PRODUCT DESCRIPTION

DWS777-QS 230V Mitre saw 216 mm, XPS, 1800 watt

### RECOMMENDED ACCESSORIES:

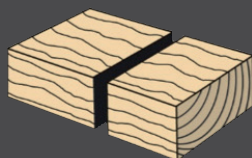
DT1952-QZ	216 mm, 24 T, 30 mm arbor diameter
DT1953-QZ	216 mm, 40 T, 30 mm arbor diameter
DT1962-QZ	216 mm, 3 pack (2X 24T/1X 40T), 30 mm arbor diameter





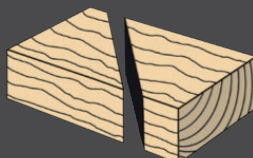
## CUTTING CAPACITIES IN MM:

**305 × 77 MM**



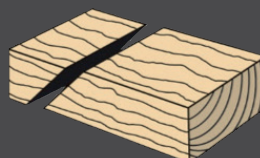
**90°/90°**

**210 × 77 MM**



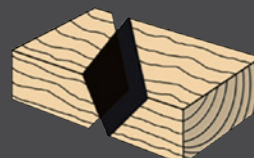
**45°/90°**

**305 × 50 MM**



**90°/45°**

**210 × 50 MM**



**45°/45°**

## 230V 250 MM MITRE SAW **DWS727**

DEWALT mitresaw with base and fence designed, machined and checked to the highest standards of accuracy to deliver 0.1° accuracy in key applications. Cam action mitre lock function makes mitre setting faster and easier allowing the user to quickly adjust angles between 0° - 50° left and 0° - 60° right. Machined side handles meet latest IEC table requirements and improve portability and handling whilst providing a stable, base for wider material. AirLock compatible dust extraction improves cut line visibility and provides cleaner and safer jobsites.

### SPECIFICATIONS

Power input	1675 Watt
Blade diameter	250 mm
Blade bore	30 mm
Max. blade speed	4000 min-1
Mitre (max. positions) left/right	50°/60°
Bevel (max. positions) left/right	49°/49°
Weight	22 kg

### RECOMMENDED BENCHES

DE7023 or DE7033 or DE7260

### ART. NO. PRODUCT DESCRIPTION

DWS727-QS	230V Mitre saw 250 mm, XPS, 1675 watt
-----------	---------------------------------------

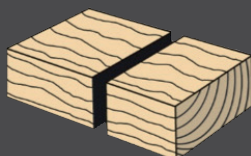
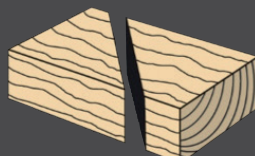
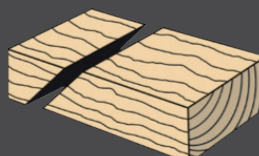
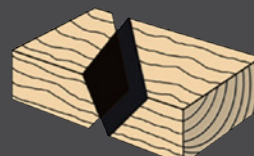
### RECOMMENDED ACCESSORIES:

DT1957-QZ	250 mm, 48 T, 30 mm arbor diameter
DT4322-QZ	250 mm, 40 T, 30 mm arbor diameter
DT4351-QZ	250 mm, 60 T, 30 mm arbor diameter




**XPS**  
CROSS CUT POSITIONING SYSTEM

## CUTTING CAPACITIES IN MM:

**305 × 85 MM**

**90°/90°**
**215 × 85 MM**

**45°/90°**
**305 × 54 MM**

**90°/45°**
**198 × 85 MM**

**45°/45°**

## 230V 250 MM MITRE SAW **DWS778**

Built on classic pull saw design and compact internal rail design for huge cutting capacity in a highly transportable format. The base and fence have been machined to meet the accuracy requirements of the most demanding applications. A tough construction saw for tough construction site environments.

### SPECIFICATIONS

Power input	1850 watt
Blade diameter	250 mm
Blade bore	30 mm
Max. blade speed	4300 min <sup>-1</sup>
Mitre (max. positions) left/right	50°/50°
Bevel (max. positions) left	48°
Weight	17,7 kg

**RECOMMENDED BENCHES:** DE7023 or DE7033

### ART. NO. PRODUCT DESCRIPTION

DWS778-QS 230V Mitre saw 250 mm, XPS, 1850 watt

### RECOMMENDED ACCESSORIES:

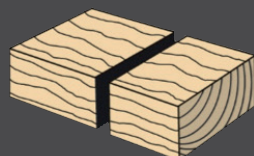
DT1956-QZ	250 mm, 24 T, 30 mm arbor diameter
DT1957-QZ	250 mm, 48 T, 30 mm arbor diameter
DT1963-QZ	250 mm, 3 pack (2X 24T/1X 48T), 30 mm arbor diameter





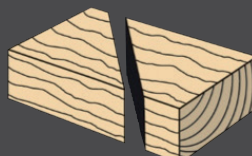
## CUTTING CAPACITIES IN MM:

**303 × 110 MM**



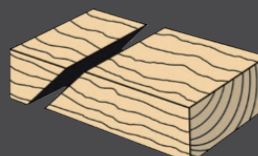
**90°/90°**

**211 × 112 MM**



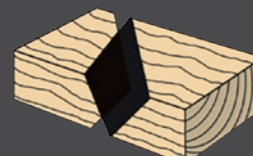
**45°/90°**

**268 × 36 MM**



**90°/45°**

**212 × 76 MM**



**45°/45°**

## 230V 305 MM MITRE SAW DWS780

The DEWALT DWS780 delivers outstanding cutting performance for small profiles and large construction timbers. Integrated angle and depth adjustments let you maintain near-perfect accuracy. An XPS™ cross cut positioning system, along with linear horizontal rails complete with bronze guides provide precise guidance when cutting materials of up to 345 mm wide.

### SPECIFICATIONS

Power input	1675 watt
Blade diameter	305 mm
Blade bore	30 mm
Mitre (max. positions) left/right	50°/60°
Bevel (max. positions) left/right	49°/49°
Weight	25,5 kg

### RECOMMENDED BENCHES

DE7023 or DE7033 or DE7260

### ART. NO. PRODUCT DESCRIPTION

DWS780-QS	230V Mitre saw 305 mm, XPS, 1675 watt
-----------	---------------------------------------

### RECOMMENDED ACCESSORIES:

DT4340-QZ	305 mm, 48 T, 30 mm arbor diameter
DT4331-QZ	305 mm, 60 T, 30 mm arbor diameter
DT4288-QZ	305 mm, 80 T, 30 mm arbor diameter



# 230 VOLT TABLE SAWS



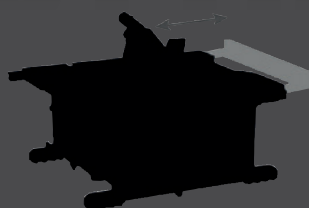




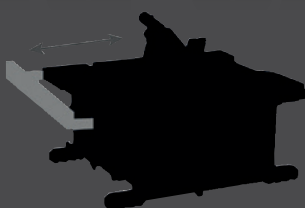




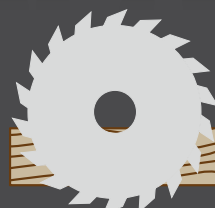
## CUTTING CAPACITIES IN MM:



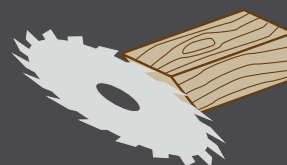
**622 MM**



**318 MM**



**65 MM  
90°**



**45 MM  
45°**

## 230V 210 MM TABLE SAW **DWE7485**

Powerful 1.850 watt motor for high performance in all applications. Fence system provides 622 mm of rip capacity in a portable design for cutting large sheet materials to size rack and pinion fence system, front and rear fence lock and large, clear scales combine to give an extremely accurate and easy to use saw.

### SPECIFICATIONS

Rated input power	1850 Watt
No load speed	5800 min-1
Blade diameter	210 mm
Blade bore	30 mm
Riving knife thickness	2,2 mm
Depth of cut at 90°	65 mm
Depth of bevel cut at 45°	45 mm
Weight	22 kg

**RECOMMENDED BENCHES:** DE7400 or DE7450/type 2 or DWE74911

### ART. NO. PRODUCT DESCRIPTION

DWE7485-QS	230V Table saw, 210 mm, 1850 watt
DWE7485RS-XC	230V Table saw, 210 mm, 1850 watt incl sawtable DE7400

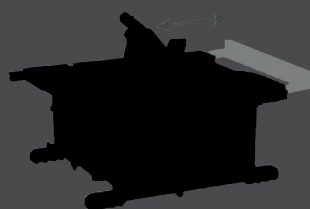
### RECOMMENDED ACCESSORIES:

DT20432-QZ	210 mm, 24 T, 30 mm arbor diameter
DT20433-QZ	210 mm, 40 T, 30 mm arbor diameter
DWV9470-XJ	Dustadapter with Y-Split, 2 ways with Airlock connection

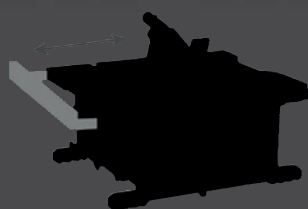




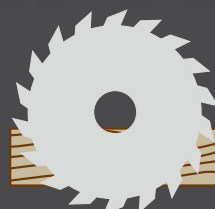
## CUTTING CAPACITIES IN MM:



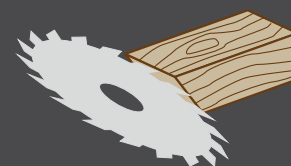
**825 MM**



**558 MM**



**77 MM  
90°**



**55 MM  
45°**

## 230V 250 MM TABLE SAW DWE7492

Powerful 2000 watt motor for high performance in all applications. Steel roll cage protects saw against jobsite drops and impacts. Rack and pinion fence system, front and rear fence lock and large clear scales combine to give an extremely accurate and easy to use saw. Quick bevel lock with large scale for easy, accurate adjustments. Fence system provides 825 mm of rip capacity in a portable design for cutting large sheet materials to size.

### SPECIFICATIONS

Rated input power	2000 Watt
No load speed	4800 min-1
Blade diameter	250 mm
Blade bore	30 mm
Riving knife thickness	2,3 mm
Depth of cut at 90°	77 mm
Depth of bevel cut at 45°	55 mm
Weight	26,5 kg
<b>RECOMMENDED BENCHES</b>	DE74912 or DWE74911

### ART. NO. PRODUCT DESCRIPTION

DWE7492-QS 230V Table saw, 250 mm, 2000 watt

### RECOMMENDED ACCESSORIES:

DT4322-QZ 250 mm, 40 T, 30 mm arbor diameter

DT4351-QZ 250 mm, 60 T, 30 mm arbor diameter

DWV9470-XJ Dustadapter with Y-Split, 2 ways with Airlock connection



# COMBINATION SAWS

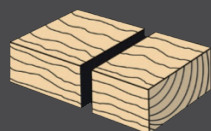




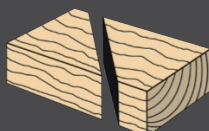




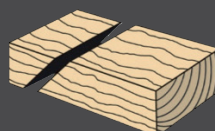
## CUTTING CAPACITIES IN MM:



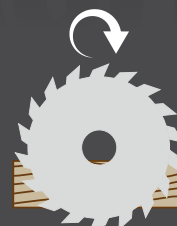
134 x 50 MM



94 X 50 MM



134 x 50 MM



50 MM  
90°

## 230V 260 MM TABLE TOP MITRE SAW DW711

Powerful dust protected 1300 Watt induction motor. Precision cast aluminium machined base and table top, guarantees high quality precision cuts in both cutting modes. Integrated blade brake, for active user protection and additional machine safety.

### SPECIFICATIONS

Power input	1300 watt
Max. blade speed	2950 min-1
Blade diameter	260 mm
Blade bore	30 mm
Riving knife thickness	2,3 mm
Mitre (max. positions) left/right	50°/ 50°
Bevel (max. positions) left/right	48°/0°
Weight	20 kg

### RECOMMENDED BENCHES:

DE7023 or DE7033

### ART. NO.

### PRODUCT DESCRIPTION

DW711-QS	230V Table top combi mitre saw 260 mm, 1300 watt
----------	--

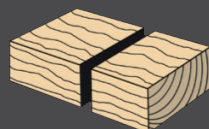
### RECOMMENDED ACCESSORIES:

DT4324-QZ	260 MM, 48 T, 30 MM arbor diameter
DT4280-QZ	260 MM, 80 T, 30 MM arbor diameter
DE7779-XJ	Dust extractor kit for DW711

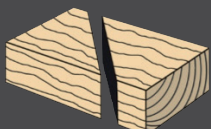




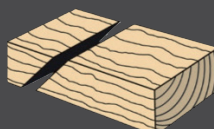
## CUTTING CAPACITIES IN MM:



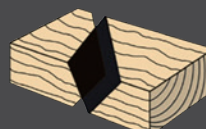
220 x 90 MM



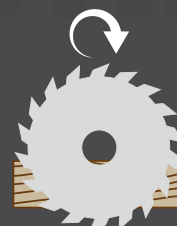
155 x 90 MM



220 x 50 MM



155 x 50 MM



51 MM  
90°

## 230V 305 MM TABLE TOP MITRE SAW D27111

Powerful 1500 Watt induction motor to meet the needs of the most demanding applications. Combination saw with crosscut and ripping capabilities. Unique design gives excellent visibility in both rip and mitre modes.

### SPECIFICATIONS

Power input	1500 watt
Max. blade speed	2950 min-1
Blade diameter	305 mm
Blade bore	30 mm
Riving knife thickness	2 mm
Mitre (max. positions) left/right	50°/60°
Bevel (max. positions) left/right	48°/0°
Weight	26,5 kg

### RECOMMENDED BENCHES

DE7023 or DE7033 or DE7260

### ART. NO. PRODUCT DESCRIPTION

D27111-QS 230V Table top combi mitre saw 305 mm, 1500 watt

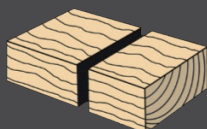
### RECOMMENDED ACCESSORIES:

DT4340-QZ	305 mm, 48 T, 30 mm arbor diameter
DT4331-QZ	305 mm, 60 T, 30 mm arbor diameter
DT1964-QZ	305 mm, 3 pack (1X24T/1X48T/1X60T), 30 mm arbor dia.

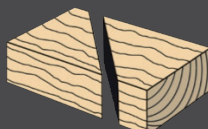




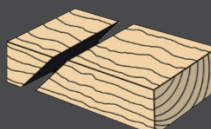
## CUTTING CAPACITIES IN MM:



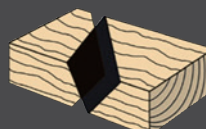
285 × 90 MM



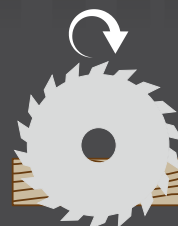
200 × 90 MM



285 × 50 MM



200 × 50 MM



51 MM  
90°

## 230V 305 MM TABLE TOP MITRE SAW D27112

Powerful 1.600 Watt induction motor to meet the needs of the most demanding applications. Combination saw with crosscut and ripping capabilities. Unique design gives excellent visibility in both rip and mitre modes.

### SPECIFICATIONS

Power input	1600 watt
Max. blade speed	3300 min-1
Blade diameter	305 mm
Blade bore	30 mm
Riving knife thickness	2 mm
Mitre (max. positions) left/right	50° / 60°
Bevel (max. positions) left/right	48° / 0°
Weight	26,5 kg

**RECOMMENDED BENCHES:** DE7023 or DE7033 or DE7260

### ART. NO. PRODUCT DESCRIPTION

D27112-QS 230V Table top combi mitre saw 305 mm, 1600 watt

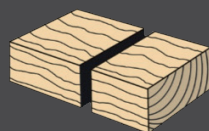
### RECOMMENDED ACCESSORIES:

DT4340-QZ	305 mm, 48 T, 30 mm arbor diameter
DT4331-QZ	305 mm, 60 T, 30 mm arbor diameter
DT1964-QZ	305 mm, 3 pack (1X24T/1X48T/1X60T), 30 mm arbor dia.

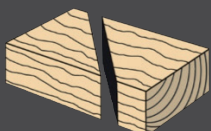




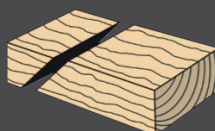
## CUTTING CAPACITIES IN MM:



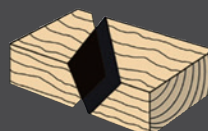
160 x 85 MM



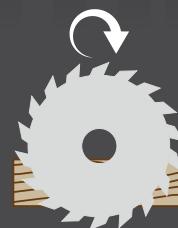
110 x 85 MM



160 x 55 MM



110 x 55 MM



51 MM  
90°

## 230V 305 MM TABLE TOP MITRE SAW D27113

Precision cast aluminium base and table top guarantees high precision cuts in both cutting modes. Powerful 1600 Watt motor to meet the needs of the most demanding applications. Lightweight and easily transported. Combination saw with crosscut and ripping capabilities.

### SPECIFICATIONS

Power input	1.600 watt
Max. blade speed	3300 min-1
Blade diameter	305 mm
Blade bore	30 mm
Riving knife thickness	2 mm
Mitre (max. positions) left/right	50°/50°
Bevel (max. positions) left/right	48°/0°
Weight	20 kg

### RECOMMENDED BENCHES

DE7023 or DE7033 or DE7260

### ART. NO. PRODUCT DESCRIPTION

D27113-QS 230V Table top combi mitre saw

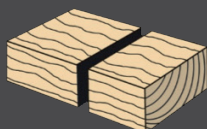
### RECOMMENDED ACCESSORIES:

DT4340-QZ	305 mm, 48 T, 30 mm arbor diameter
DT4331-QZ	305 mm, 60 T, 30 mm arbor diameter
DT1964-QZ	305 mm, 3 pack (1X24T/1X48T/1X60T), 30 mm arbor dia.

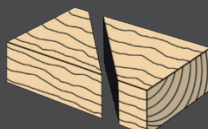




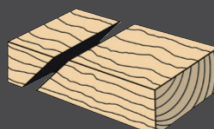
## CUTTING CAPACITIES IN MM:



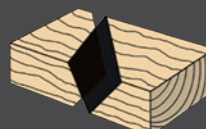
140 × 68 MM



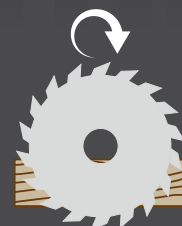
95 × 70 MM



70 × 95 MM



50 × 95 MM



70 MM (90°)  
32 MM (45°)

## 230V 250 MM FLIP-OVER SAW DW743N

The classic flip-over bevelling saw. Rapid tool free transformation from a saw bench to a mitre saw provides flexibility in a range of site and workshop applications. Designed for maximum cutting capacity across the range of mitre and bevel angles.

### SPECIFICATIONS

Power input	2000 watt
No-load speed	2850 min-1
Blade diameter	250 mm
Blade bore	30 mm
Riving knife thickness	2,3 mm
Mitre (max. positions) left/right	45°/45°
Bevel (max. positions) left	45°
Weight	37 kg

### ART. NO. PRODUCT DESCRIPTION

DW743N-QS	230V Combination flip over saw 250 mm, 2000 watt
-----------	--

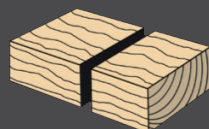
### RECOMMENDED ACCESSORIES:

DT1957-QZ	250 mm, 48 T, 30 mm arbor diameter
DT4351-QZ	250 mm, 60 T, 30 mm arbor diameter
DE3500-XJ	Dust extraction set

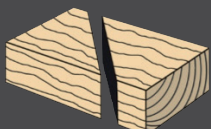




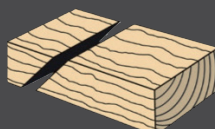
## CUTTING CAPACITIES IN MM:



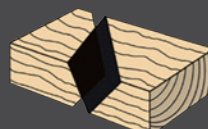
205 × 63 MM



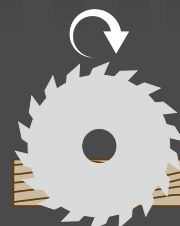
160 × 63 MM



205 × 50 MM



160 × 50 MM



80 MM (90°)  
56 MM (45°)

## 230V 305 MM FLIP OVER SAW D27107

Combination saw combines the accuracy of modern mitre saws with the power and capacity of dedicated table saws. Additional wheels and wheel barrow mode result in the saw being extremely easy to transport around the jobsite. Electronic pack provides massive overload protection and constant cutting speed for optimal cutting performance.

### SPECIFICATIONS

Power input	2000 watt
Max. blade speed	4000 min-1
Blade diameter	305 mm
Blade bore	30 mm
Riving knife thickness	2,5 mm
Mitre (max. positions) left/right	48°/48°
Bevel (max. positions) left/right	48°/2°
Weight	42 kg

### ART. NO. PRODUCT DESCRIPTION

D27107-QS	230V Combination flip over saw 305 mm, wheels, 2000 watt
-----------	--

### RECOMMENDED ACCESSORIES:

DT4331-QZ	305 mm, 60 T, 30 mm arbor diameter
DT4288-QZ	305 mm, 80 T, 30 mm arbor diameter
D271054-XJ	Dust extraction kit for D27107



A construction worker wearing a white hard hat, safety glasses, a black jacket, and a high-visibility yellow vest is standing in a construction site. He is holding a yellow DeWalt saw bench. The background shows a concrete structure with several vertical rebar columns and stacks of metal beams.

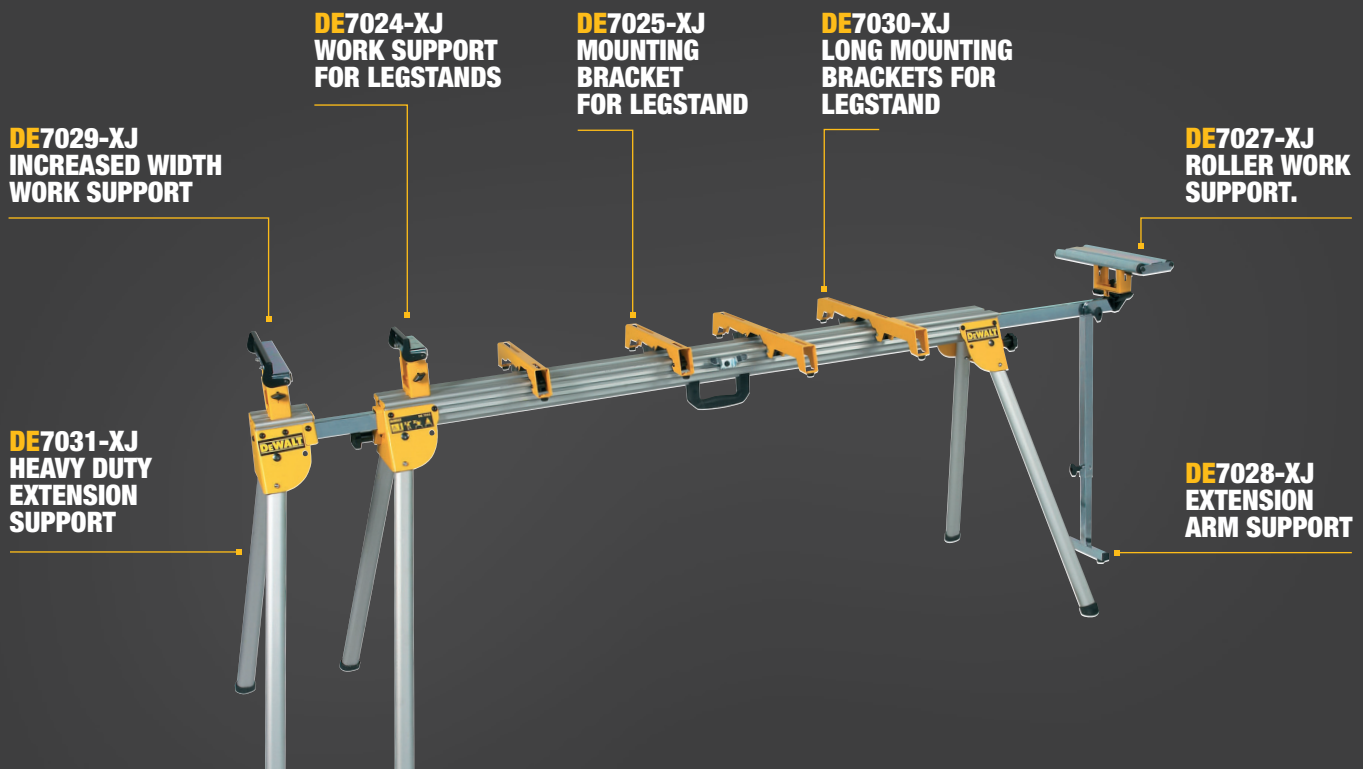
# SAW BENCHES AND ACCESSORIES FOR SAWS







# DEWALT LEGSTAND SYSTEM FOR MITRESAWS



**DE7023**



**DE7033**



**DE7035**



**DE7260**





# DEWALT LEGSTAND SYSTEM FOR TABLESAWS



**DE7400**

SUITABLE FOR **DWE7485**  
AND **DCS7485** (TYPE 3)



**DE7450 (TYPE2)**  
SUITABLE FOR **DWE7485**, **DCS7485**



**DWE74912 (TYPE2)**  
SUITABLE FOR **DWE7492**



**DWE74911 (TYPE2)**  
SUITABLE FOR **DWE7485**, **DWE7492**, **DCS7485**



# ACCESSORIES FOR STATIONARY SAWS

**DE7053-QZ**

Dust bag for DWS773/774/777/778/727/780  
and DCS365/777/727/DHS780

**DE7778-XJ**

Dust extractor kit for older DW777 SERIES

**DE7779-XJ**

Dust extractor kit for older DW777 SERIES

**DWV9470**

(2-way dustadapter with airlock)  
Suitable for DWE7485, DWE7492, DCS7485

**D271058-XJ**

Right hand extension table for D27107

**DE3472-XJ**

Right hand extension stand for DW743N

**DE3473-XJ**

Parallel fence for DW743N

**DE3474-XJ**

Adjustable stand for D27107/ DW743N



# ACCESSORIES FOR STATIONARY SAWS

**DEWALT**

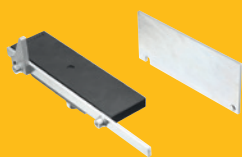
**DE3491-XJ**

500 mm guide tubes for D27107/ DW743N

**DEWALT**

**DE3494-XJ**

Set guide tubes for D27107/ DW743N



**DE3495-XJ**

Workpiece support for D27107/ DW743N



**DE3496-XJ**

Sliding mitre fence for DW743N



**DE3500-XJ**

Dust extraction kit for DW743N



**D271054-XJ**

Dust extraction kit for D27107

**DEWALT**

**D271055-XJ**

Sliding table for D27107





## 230V 300 MM RADIAL ARM SAW DW721KN

Quiet maintenance free induction motor delivers high power even at the maximum cutting capacities of the machine. Solid cast Iron arm and four roller bearings in the motor head assembly ensure high accuracy and durability. Pre-assembled and adjusted, delivered in a wooden crate for maximum transportation protection. Free standing radial arm saw with 507 mm of crosscut capacity and 90 mm depth of cut.

### SPECIFICATIONS

Power input	2000 watt
Blade diameter	300 mm
Blade bore	30 mm
No-load speed, 50 Hz	3000 min-1
Depth of cut at 90°	90 mm
Max. crosscut capacity at 0°	507 mm
Depth of cut at 45°	60 mm
Overall dimensions	176 x 122 x 77 cm
(with legstand)	176 x 122 x 147 cm
Weight	115 kg

### ART. NO. PRODUCT DESCRIPTION

DW721KN-QS	230V – 300 mm radial arm saw, 2000 watt
------------	---

### ACCESSORIES INCLUDED:

1 pcs each	32 tooth saw blade, Blade brake, Legstand, Assembly tool, Automatic safety return
------------	---





## 400V INDUSTRIAL 350 MM RADIAL ARM SAW DW729KN

The industrial radial arm saw performs accurate crosscuts time after time. Unrivalled reputation in the professional woodworking industry. Quiet maintenance free three phase induction motor delivers maximum power even at the maximum capacity of the machine. Solid cast iron arm machined to provide arm tracks with no inserts, increasing accuracy and life. Free standing radial arm saw with 525 mm of crosscut capacity, and 110 mm depth of cut. Standard equipment includes a dust shroud with 4" outlet.

### SPECIFICATIONS

Voltage	400 volt
Power input	4000 watt
Blade diameter	350 mm
Blade bore	30 mm
No-load speed, 50 Hz	3000 min-1
Depth of cut at 90°	110 mm
Max. crosscut capacity at 0°	525 mm
Depth of cut at 45°	75 mm
Overall dimensions (with legstand)	181 X 134 X 152 cm
Weight	149 kg

### ART. NO.

DW729KN-QS

### PRODUCT DESCRIPTION

Radial arm saw 350 mm, 400 volt

### RECOMMENDED ACCESSORIES:

1 pcs each

32 tooth saw blade, Blade brake, Legstand, Assembly tool, Automatic safety return



**www.DeWALT.com**

The yellow and black colour scheme is used on DeWALT Power Tools and Accessories as a trademark. DeWALT cannot be held liable for any inaccuracies of description or illustration and reserve the right to change specifications without notification.

**Be the first to see product news and special offers from DeWALT. Register at MyDeWALT**

